

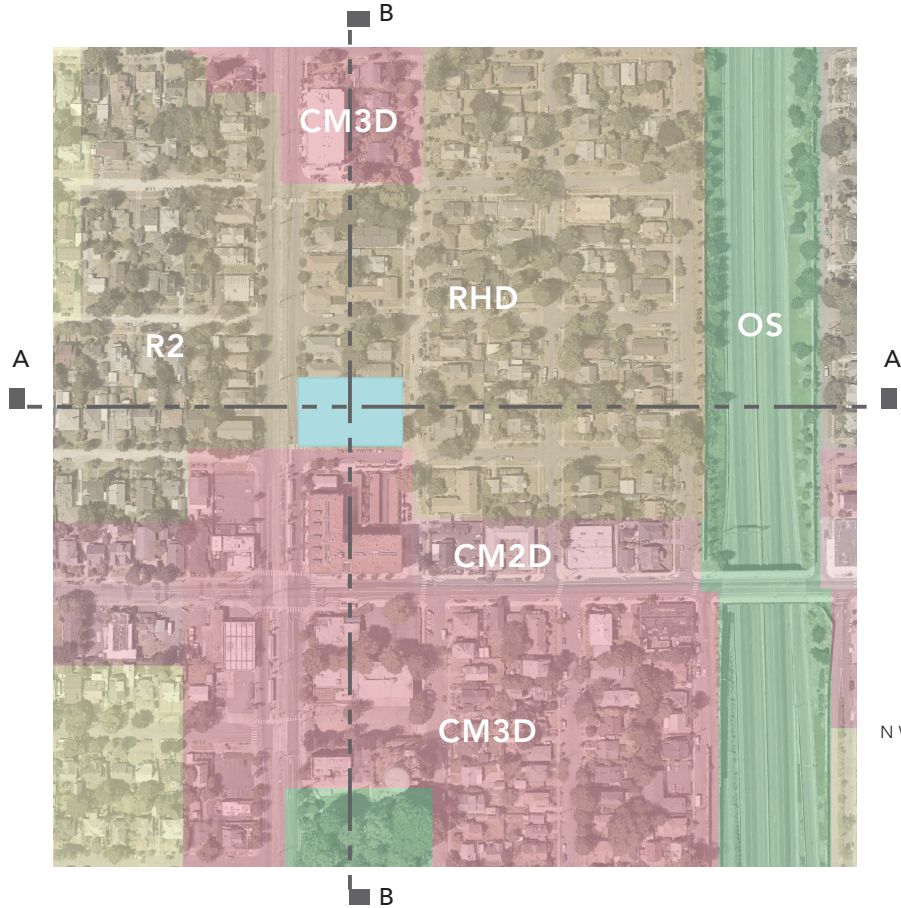


1431 N CHURCH STREET

PRESENTED BY WORKS PROGRESS ARCHITECTURE

OCTOBER 16, 2018

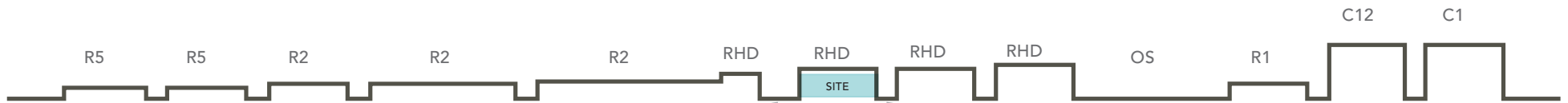
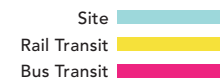
SITE ANALYSIS



Zoning Diagram



Vicinity Map



A-A: East - West Section

N Interstate St. N Maryland Ave.



B-B: North - South Section

N Jessup St. N Church St.

RENDERINGS



View From South-West



Aerial From South-East

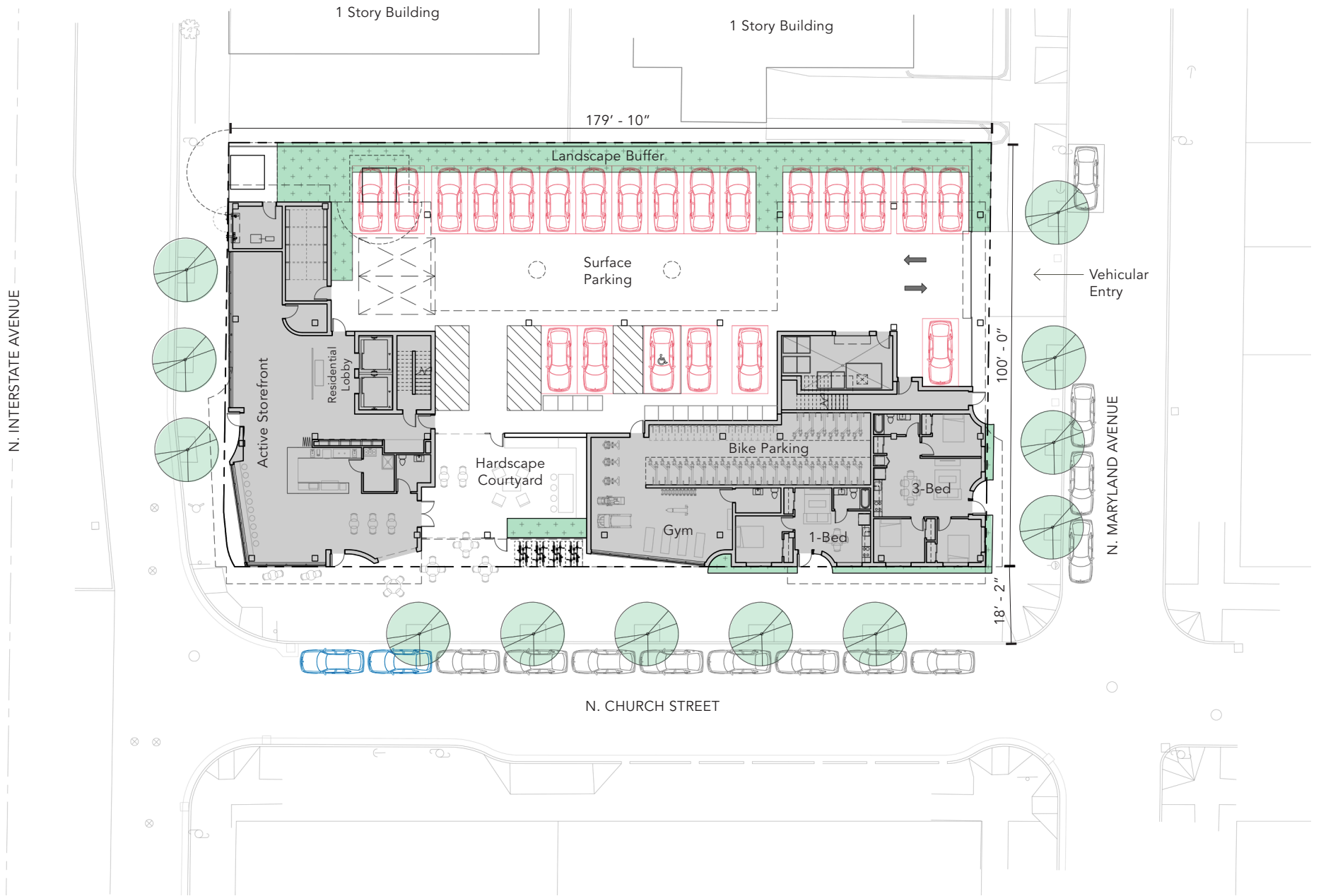


View From South-East



View From North-West

PROPOSED SITE PLAN



 New Parking

 New Street Parking

